



AOV Systems

STRATUS
STRATUS

**EN12101-2 LOUVERED SMOKE VENTILATION
RANGE**

AOV Systems Louvered Smoke and Natural Ventilation Range.
Designed to meet and exceed all expectations operationally and
aesthetically.

The AOV Systems **STRATUS** range of Louvered Ventilators consists of 3 products types with numerous variants.

Types

LP-AOV- Range of Louvered Ventilators offering, Uninsulated, Insulated and Polycarbonate options suitable for all smoke and natural ventilation and cooling requirements.

LP-AOV – U (Uninsulated)

LP-AOV – I (Insulated)

LP-AOV – P (Polycarbonate)

LT-AOV- Range of Louvered Ventilators offering, Insulated, Polycarbonate and Glass options suitable for all smoke and natural ventilation and cooling requirements.

LT-AOV – I (Insulated - Double Insulated Aluminium)

LT-AOV – P (Polycarbonate - 16mm, 25mm, Clear or Opal)

LT-AOV – G (Glass – Single or Double)

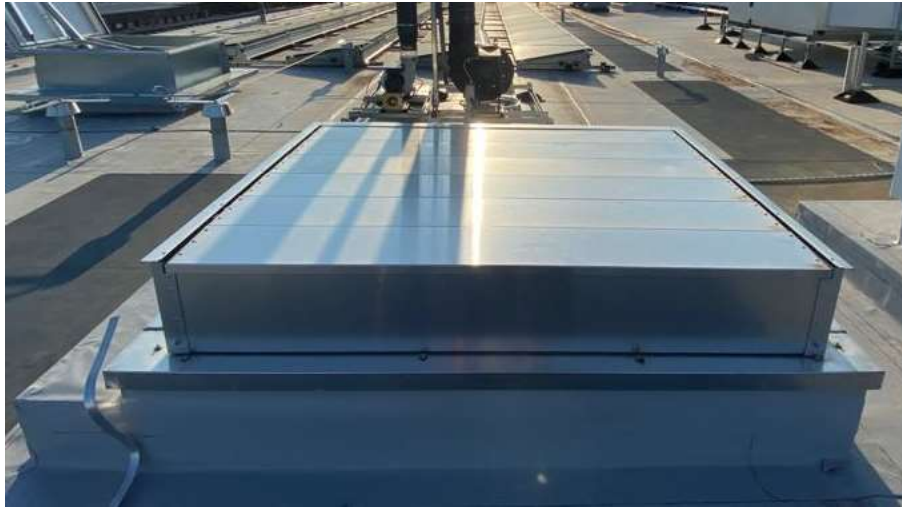
LA – AOV90 - Range offering a 90degree opening louvered ventilator suitable for natural ventilation and roof access.

LA – AOV90 – I (Insulated - Double Insulated Aluminium)

LA – AOV90 – P (Polycarbonate - 16mm, 25mm, Clear or Opal)

LA – AOV90 – G (Glass – Single or Double)

LP-AOV Range



AOV Systems Stratus LP-AOV Range offers a complete solution to smoke and natural ventilation that can also be used for corridor cooling. Available in a range of dimensions, control operations and finishes making it suitable for a wide range of applications.

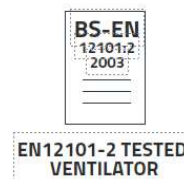
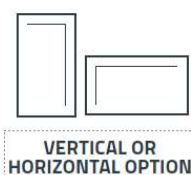
EN Tested

All of the smoke control products brochure in this leaflet have been tested to international standards and have been CE Marked.

European standards are technical standards drafted and maintained by CEN, CENELEX AND ETSI. Standards include requirements and/or recommendations in relation to products, systems, processes or services. Standards can also be used to describe a measurement or a test method or to establish a common terminology within a specific sector.

AOV Systems products have been tested to EN 12101-2. This standard covers products in the sector of smoke control. EN12101-2 covers Natural Smoke and Heat Exhaust Ventilators (N-SHEV's).

STRATUS Product Benefits



STRATUS

Finish

The Stratus is available in an extensive range of finishes. The blades are available in un-insulated aluminium, insulated aluminium and polycarbonate. Furthermore, the finish can either be single skin aluminium finish or PPC to any RAL/BS and finish. This allows the Stratus to suit varied applications whilst not compromising on aesthetics.

N-SHEV

The Stratus is an economical option to ensure safety in case of a fire emergency. It can be used as part of a Smoke and Heat Exhaust Ventilation System (SHEV) or/and comfort ventilation.



Vertical or Horizontal Options

The Stratus can be installed vertically or horizontal allowing it to be installed either as a head of a smoke shaft or a corridor ventilator. In addition, it can be controlled either electrically, pneumatically or manually enhancing its versatility to suit any application needed.

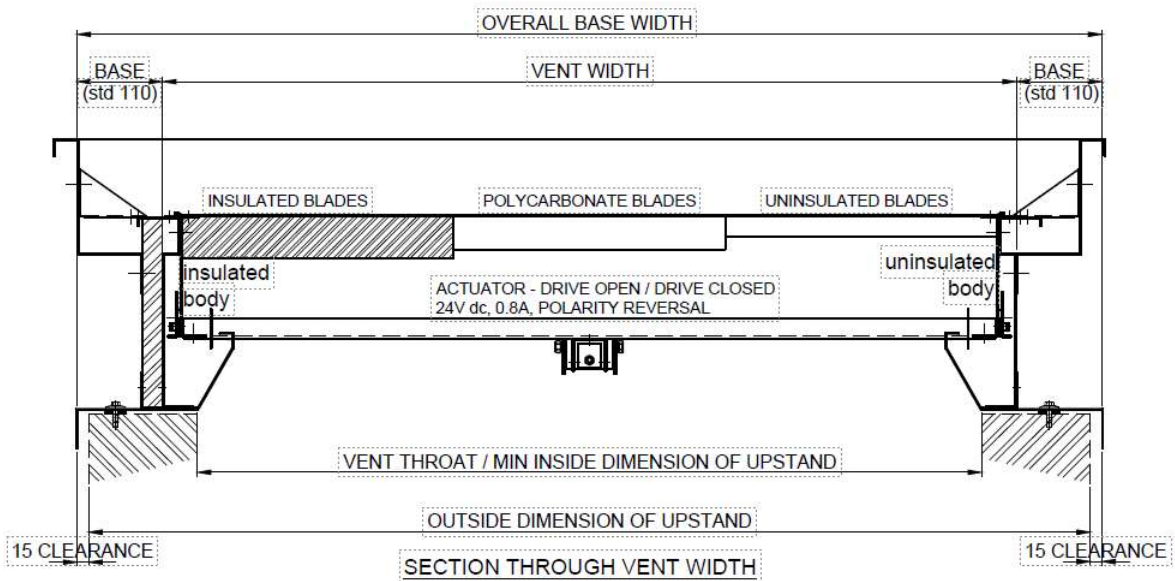
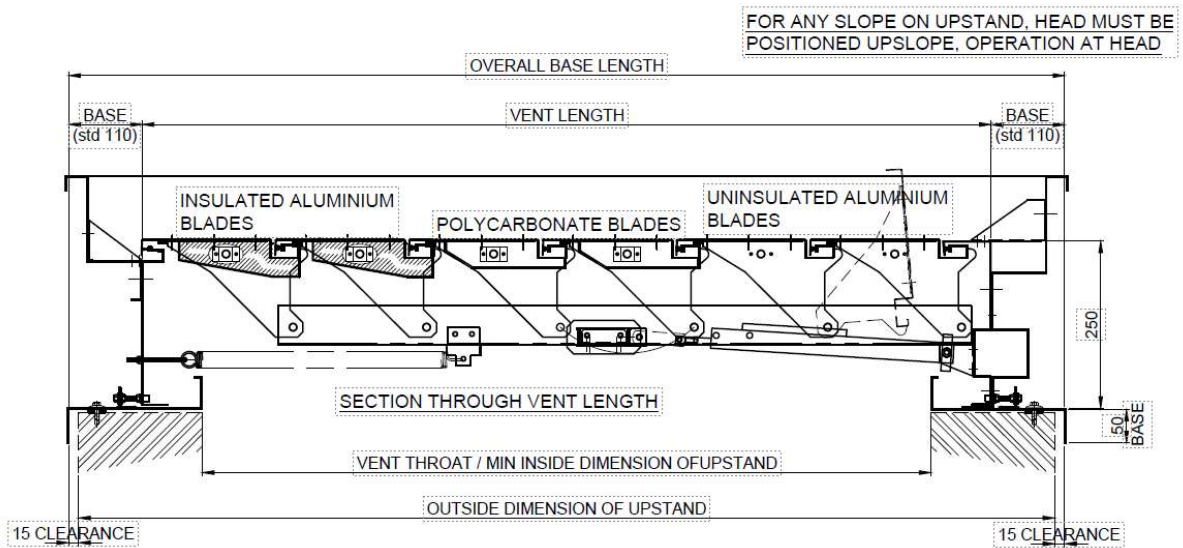
Approvals

The Stratus has been tested to EN 12101-2 in a wide variety from sizes from 870mm length (vent size) 500mm width (vent size) to 3470mm length (vent size) to 2000mm width (vent size). In addition, the Stratus base is not standard and can be tailored order to suit any size required. Offering you full control over your smoke ventilator.

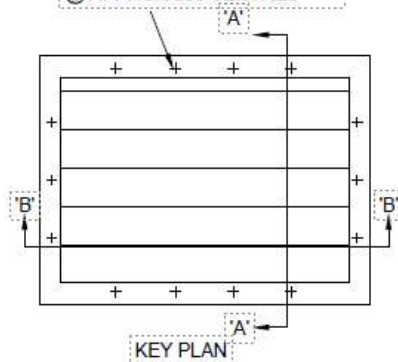
Easy Installation & Servicing

The option of demountable blades offers you easier access to the actuators from the outside making already a low-maintenance smoke ventilator effortless to service. The product is delivered to the client already pre-assembled saving time and cost on site.

LP AOV Range Generic Drawing Package



PLACE VENT BASE ON TO CONTINUOUS MASTIC BEAD & FIX WITH BUILDDEX N°12 x 25 LONG STITCHING SCREWS @ APPROX 300 CENTRES



Typical Application

Width starts at throat size 410mm, Vent size 500mm it goes up in increments of 100mm to max throat size 1910mm and max vent size of 2000mm.

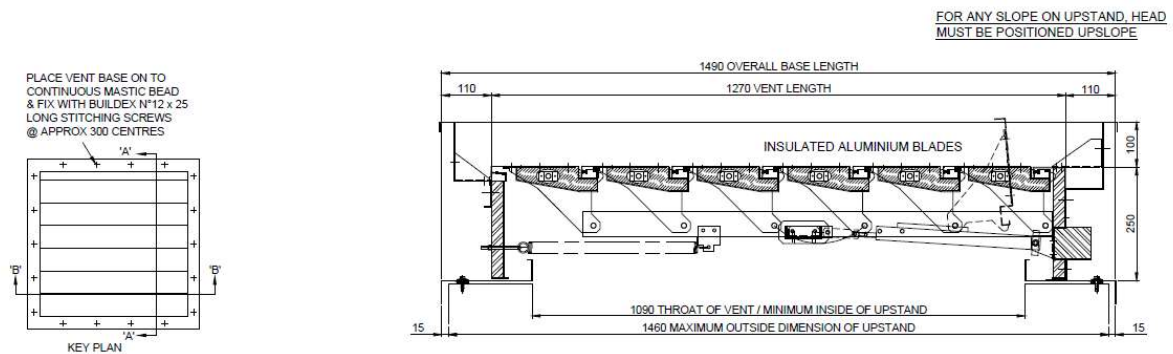
Length starts at throat size 690mm, Vent size 870mm it goes up in increments of 200mm to max throat size 3290mm and max vent size of 3470mm.

A range of sizes are available to meet the 1.0m² and 1.5m² minimum free area requirements. Please contact us for more information relating to the application or specification of these products.

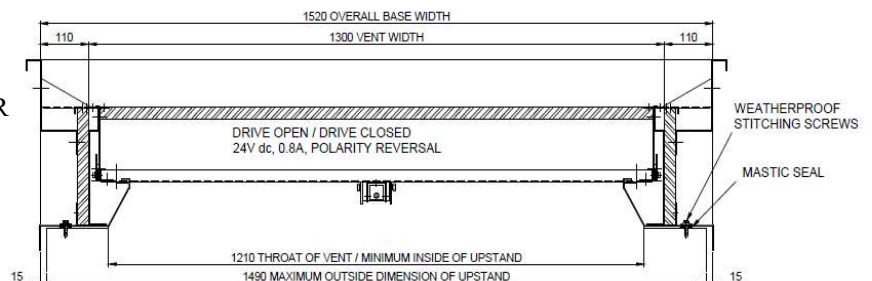
Example illustrated below has a free area of 1m² Approved Document B

Approved Document B Free Area

Blade Code	Throat Length (mm)	Vent Length (mm)	Throat Width (mm)	Vent Width (mm)
06	1290	1470	1210	1300



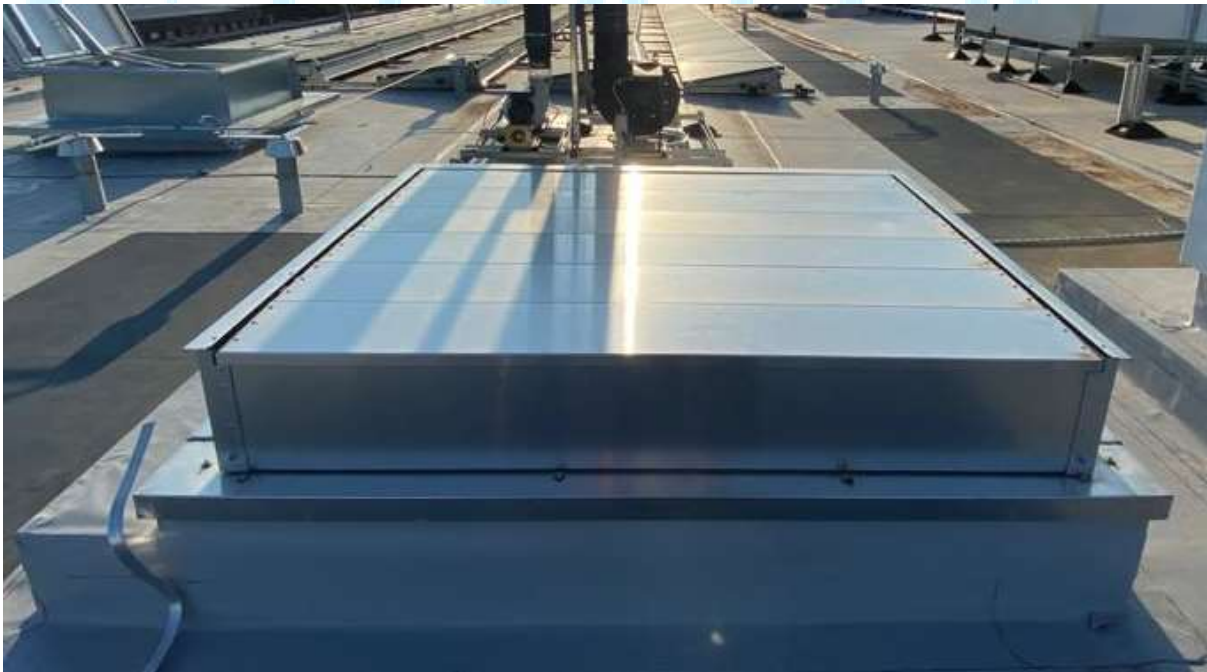
STRATUS LOUVERED VENTILATOR
 DRIVE OPEN/ DRIVE CLOSED 24V dc,
 0.8A, POLARITY REVERSAL THIS
 VENT HAS BEEN TESTED TO BS EN
 12101 Pt 2 MILL FINISH INSULATED
 ALUMINIUM



FREE AREA = 1.32m²
 AERODYNAMIC FREE AREA = 0.92m²
 FREE AREA to Approved Document B =
 1.04m²
 WEIGHT 31.5

STRATUS

Installations



LT-AOV Range



STRATUS LT- AOV Product Features

STRATUS LT-AOV is a multi louvered ventilator that provides an economic, nonpowered method of ventilation, allowing the removal of large quantities of warm air and / or smoke from a building within a short period of time. The Stratus LT-AOV is suitable for air feed (facade), air extraction (facade an roof) and natural lighting. The vents are manufactured according to ISO 9001 quality control standards. The vents are formed from high quality corrosion resistant aluminium to ensure low maintenance requirements and watertightness. Various methods of operation using pneumatic or electric actuators are available. The ventilator design produces a versatile economic unit suitable for a wide range of applications. Available on large dimensions, up to 2400 x 3826 mm (width x length).



Typical Applications

Versatile scope of applications on roofs and facades, with an installation angle range from 0° to 90°. Installations: Industrial buildings, warehouses, logistics centres, shopping centres, atria, etc..

Materials

Aluminium; tempered, sea water and corrosion resistant AlMg3 and extruded aluminium profiles for the frames. Corrosion-resistant bearings. The aluminium is supplied untreated as standard. Free of silicones.

Dimensions

Roof opening width W: 300 - 2400 mm

Roof opening length L: 746 - 3826 mm (17 louvres, max.)

Opening Angle

Individual adjustable from 0° up to 90°

Controls Natural Ventilation

P - Single pipe compressed operation

P2 - Double pipe compressed air operation

M230V Electric motor

Controls Fire Ventilation

M230V Electric motor

PF - Single pipe compressed air operation with fire function

P2F - Double pipe compressed air operation with fire function

M24V Electric motor

Louvered Blade and Base Options

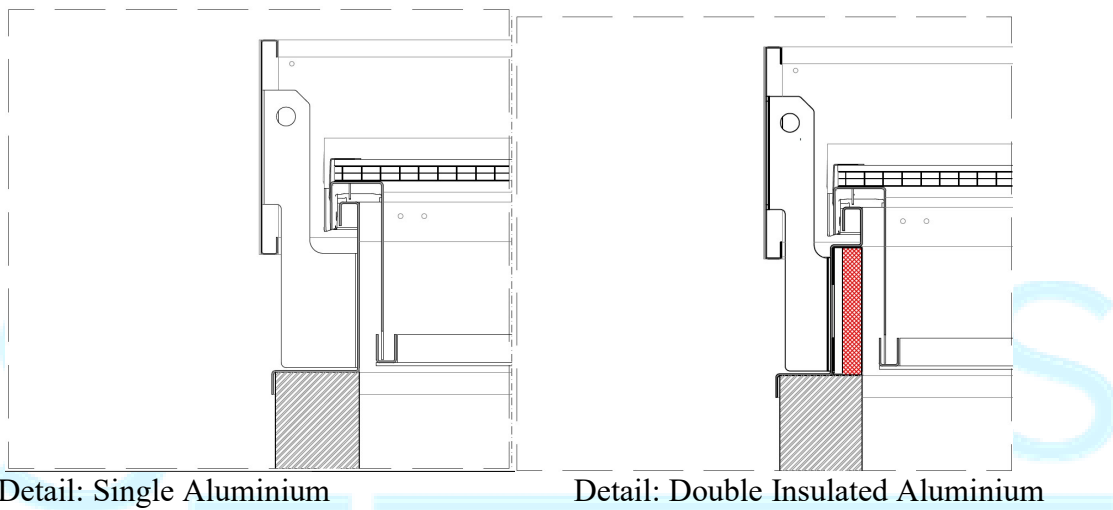
Blades

AL	Single aluminium
ALISO	Double insulated aluminium
PC16	Polycarbonate 16mm, clear or opal
PC25	Polycarbonate 25mm, clear or opal
GLASS	Single or double glass

Bases

Single Aluminium

Double Insulated Aluminium

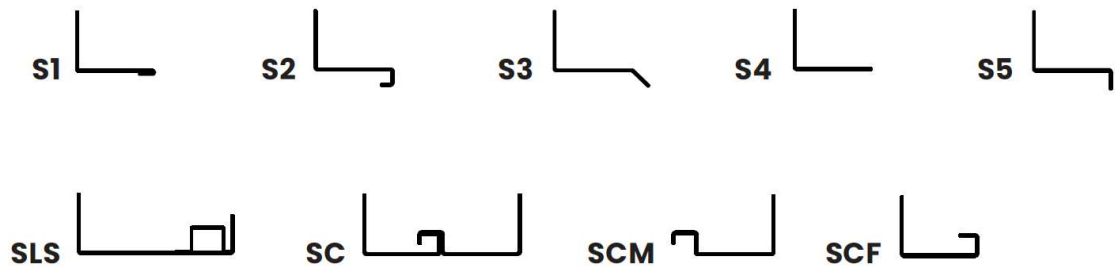


Flanges

S1	Flange for single glass
S2	Flange for double glass
S3	Flange for roofs, 45° bended
S4	Flange for roofs and facades
S5	Flange for upstand, 90° bended downwards
S6	Flange 90° bended upwards
SLS	Flange for skylight connection, for different polycarbonate thicknesses
SC	Flange for connection with other flange (vents connection). Male or female connection.
SCM	Flange for male connection
SCF	Flange for female connection

*Custom flange design and insulated flanges upon request

STRATUS



Weight

Dependent on Dimensions and Infill Type

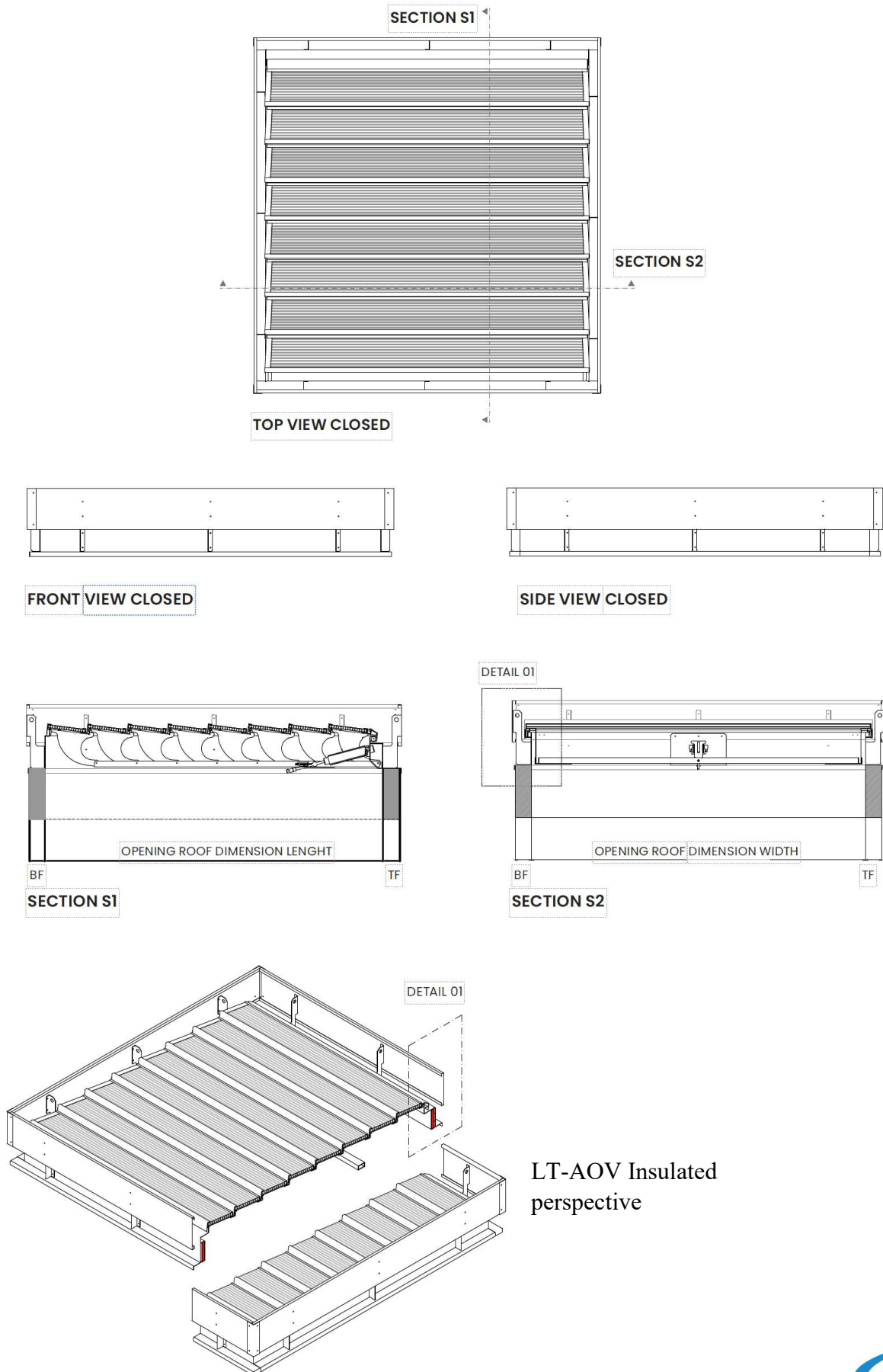
Options

Custom Dimensions / powder-coated deign (any RAL colour) / Bird or insect mesh/ Anti-fall grid
1200 J

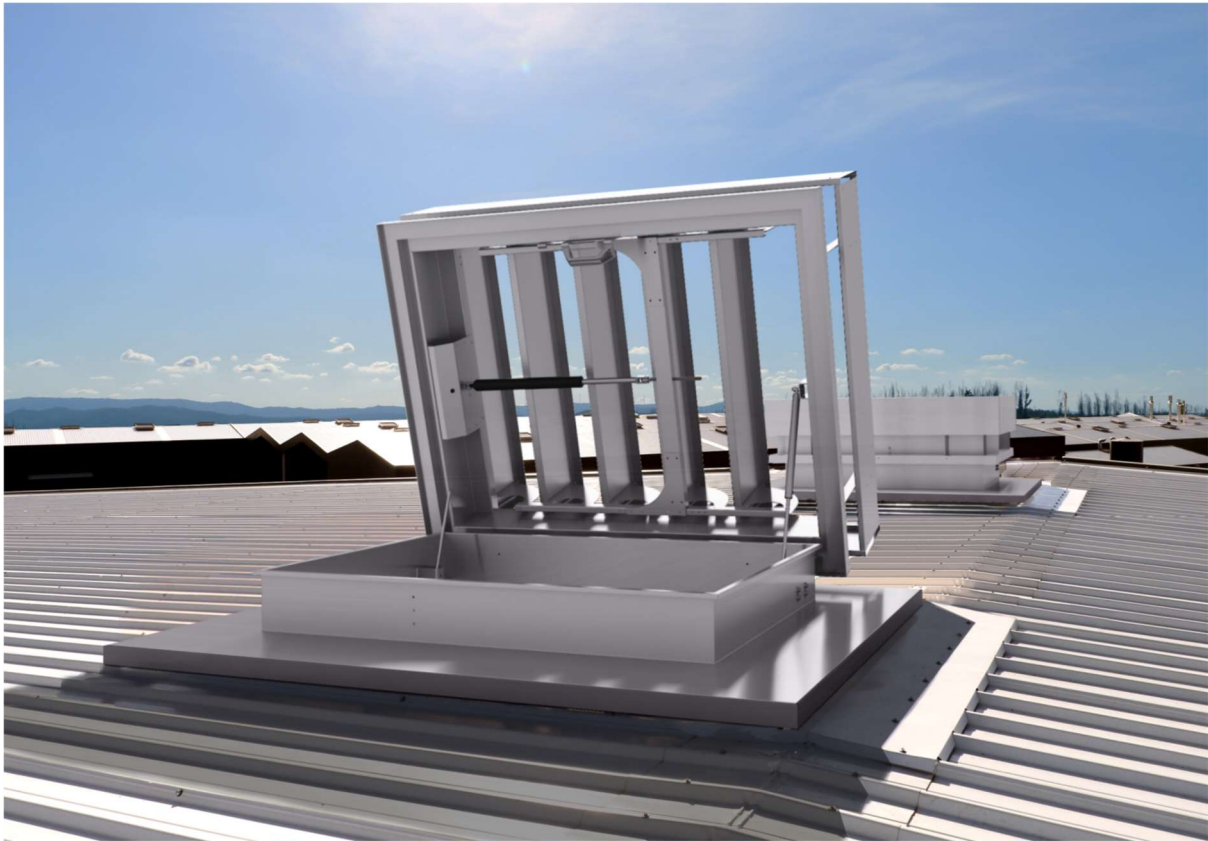
Regulations

The system has been tested and is certified in accordance with EN 12101-2

LT AOV Range Generic Drawing



LA-AOV90 Range



STRATUS LA-AOV90 Product Features

STRATUS LA-AOV90 is a combination of the multi louvered ventilator type LT-AOV with a hinging base adaptor for roof access. This solution meets the need for a EN12101-2 certified natural smoke exhaust ventilator that is also suitable as a roof entry hatch. The base adaptor is formed from high quality corrosion resistant aluminium and is available with single wall or double wall insulated base. Sideways opening can be either manual with gas springs or with electric motors. The LA-AOV90 as opening lid is available with various louvre- and base options and has standard a 24Vdc motor for daily ventilation and smoke exhaust.

Typical Applications

To be installed on the roof, standard provided with a S5 flange type for fixing onto an upstand.
Other flange options possible on request.

Materials

Aluminium; tempered, sea water and corrosion resistant AlMg3 and extruded aluminium profiles for the frames.

The aluminium is supplied untreated as standard. Free of silicones.

Dimensions

roof opening width 900 – 1800 mm

roof opening length 966 – 2506 (11 Louvres, max)

Some configurations need to be evaluated due louvres materials.

Consult technical department.

Opening Angle

Strata LA-AOV90 individual adjustable from 0° up to 90°

Access roof hatch opening to 90°

Controls

Opening sideways for roof access manually with gas springs and handle with internal lock, or 24Vdc electric.

Operation for day-to-day ventilation and smoke exhaust ventilation 24Vdc electric.

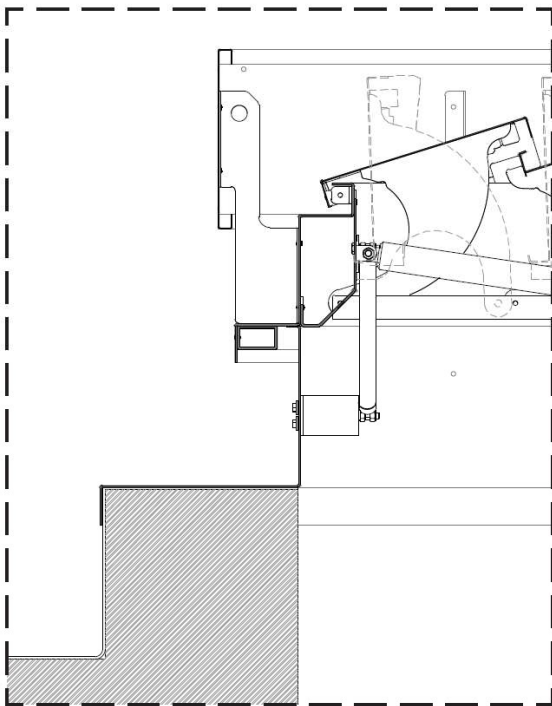
Louvered Blade and Base Options

Blades

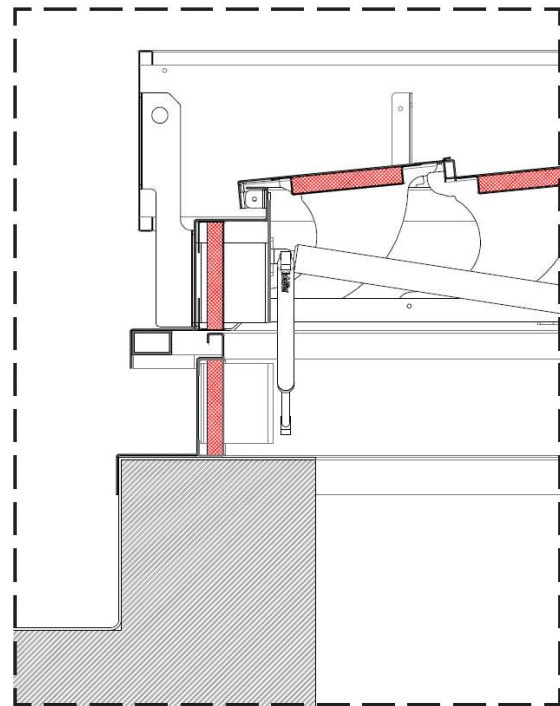
AL	Single aluminium
ALISO	Double insulated aluminium
PC16	Polycarbonate 16mm, clear or opal
PC25	Polycarbonate 25mm, clear or opal

Bases

- Single Wall
- Double Wall Insulated



Detail 01 Single Wall



Detail 02 Double Wall Insulated

Flanges

S5 Hinging Base

*Custom flange design and insulated flanges upon request



STRATUS

Weight

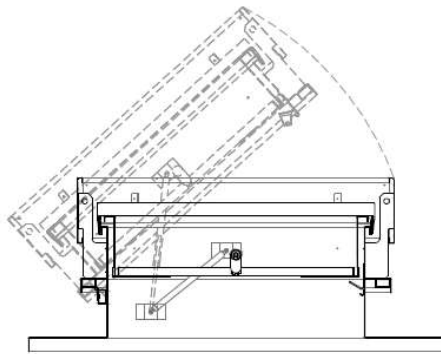
Dependent on Dimensions and Infill Type

Options

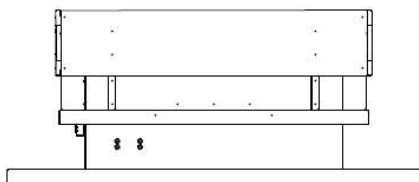
Polyester Powder Coating

STRATUS

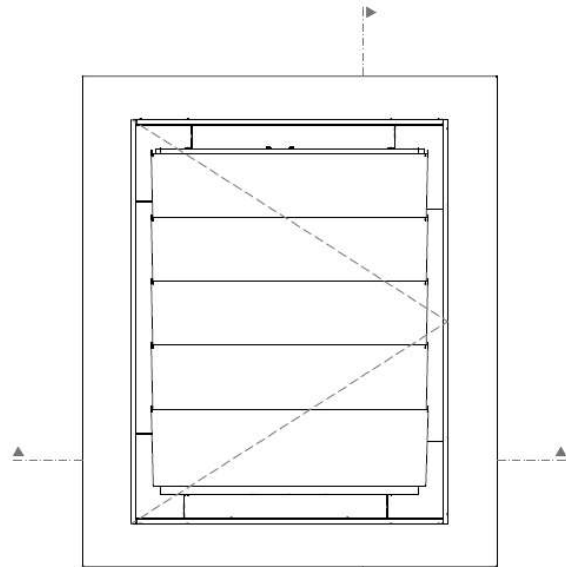
LA AOV90 Range Generic Drawing



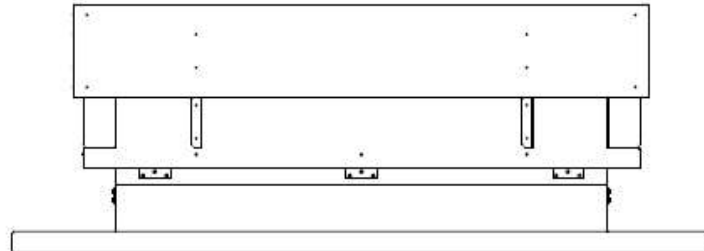
SECTION S2



FRONT VIEW

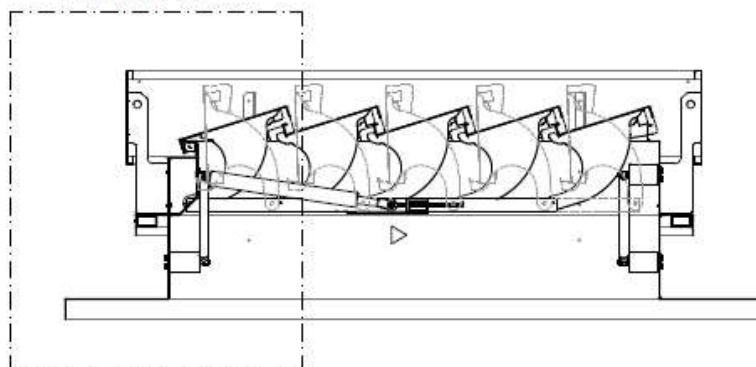


TOP VIEW



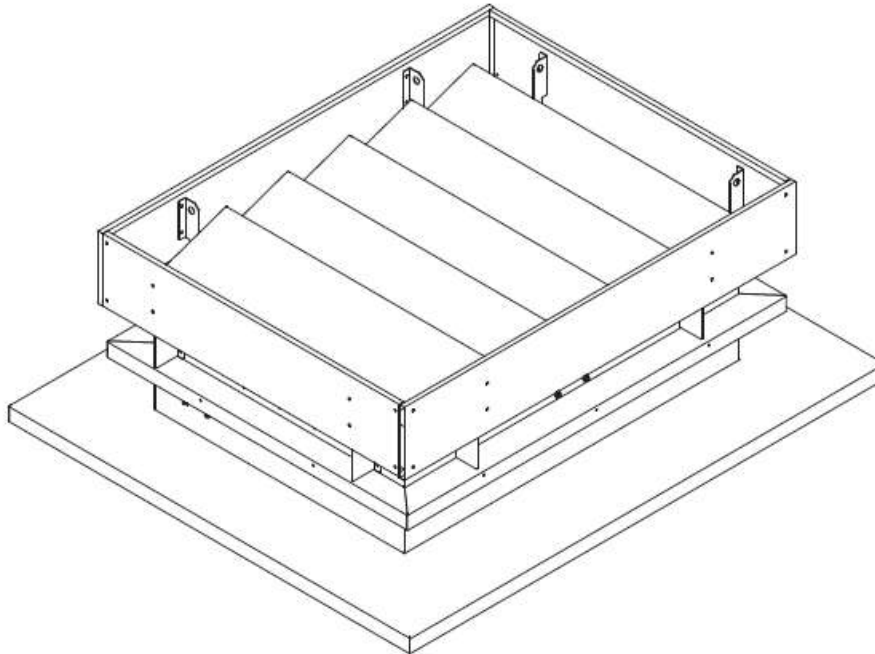
SIDE VIEW

DETAIL 01

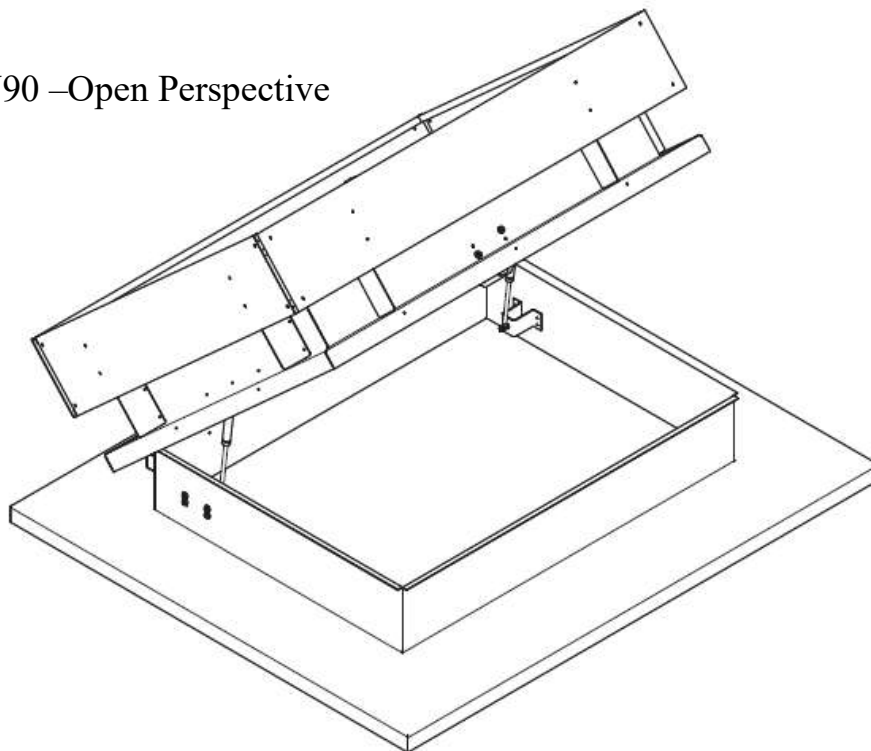


SECTION S1

LA AOV90 – Closed Perspective



LA AOV90 –Open Perspective



About Us

AOV Systems covers the entirety of the UK. We offer an exciting range of Smoke Ventilation, Natural Ventilation, Control Panels, Roof Access Hatches, Gated Handrails, Louvres and Rooflights. Offering supply only as well as supply and installation packages.

Contact

AOV Systems Ltd

Unit G11

Woodroyd Mills

Cleckheaton

WF15 6PS

Tel: 01494 266652

Email: info@AOV-Systems.com

Web: www.AOV-Systems.com

